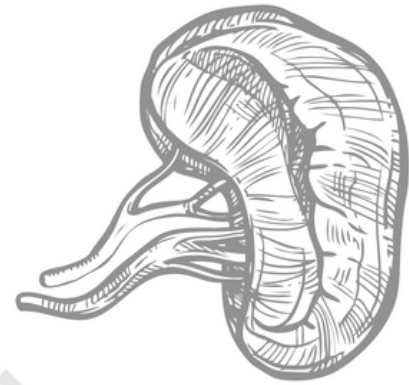
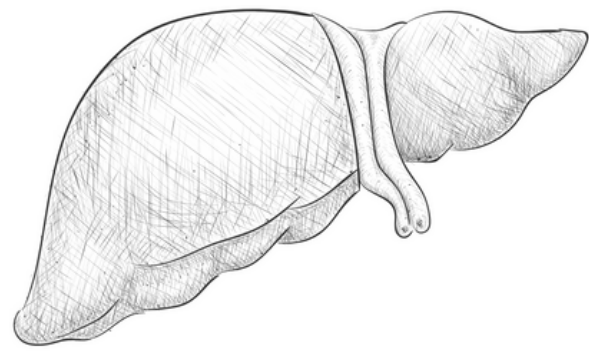


PROGRESSION PATHOLOGIE →

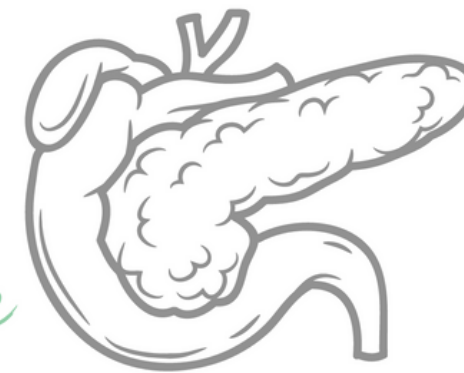
INTOXIQUÉ



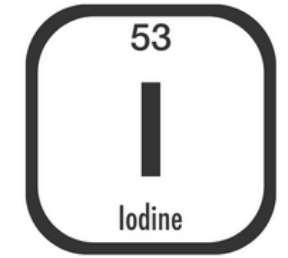
LYMPHOÏDE
HUMIDE
Régime diabétique

BROMELIUM

γ



VASCULAIRE



Régime Hypotoxique

DÉTOXIUM

α1

CURCUMIUM

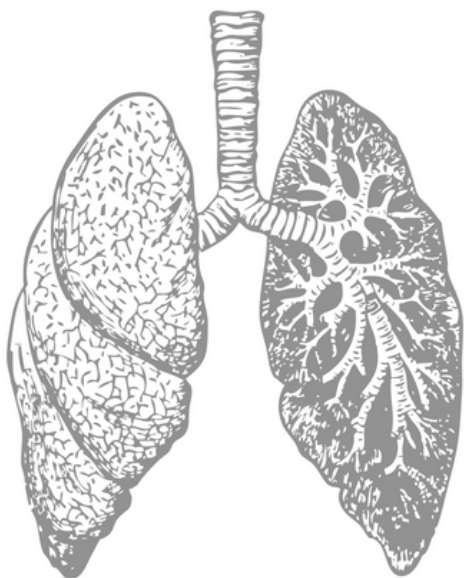
α2

IMMUNIUM
DÉSTABILISATION
ANTI-OXYDIUM

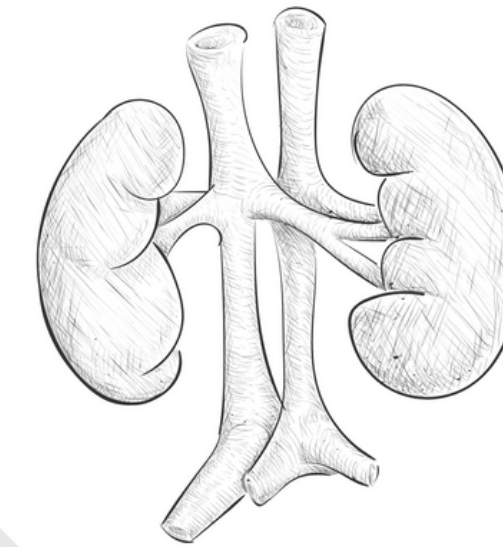
β

SYNERGIUM Q10
SYNER. OMEGA 3

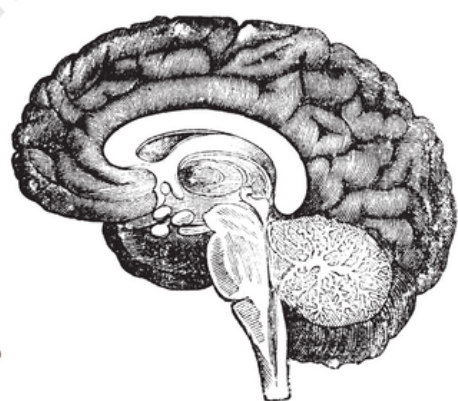
ANTI-AGIUM



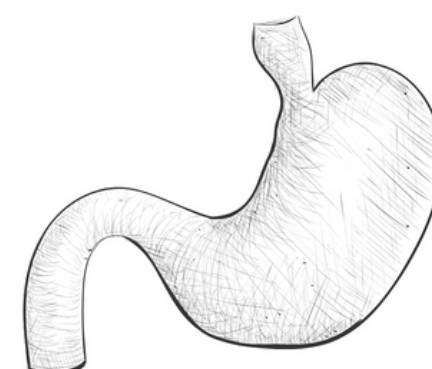
SYNERGIUM OMEGA 3
HORMONIUM



DYSTONIQUE
Désintérêt pour le présent



ACIDE
SEC
Régime Seignalet



DÉMINÉRALISÉ
Solitude